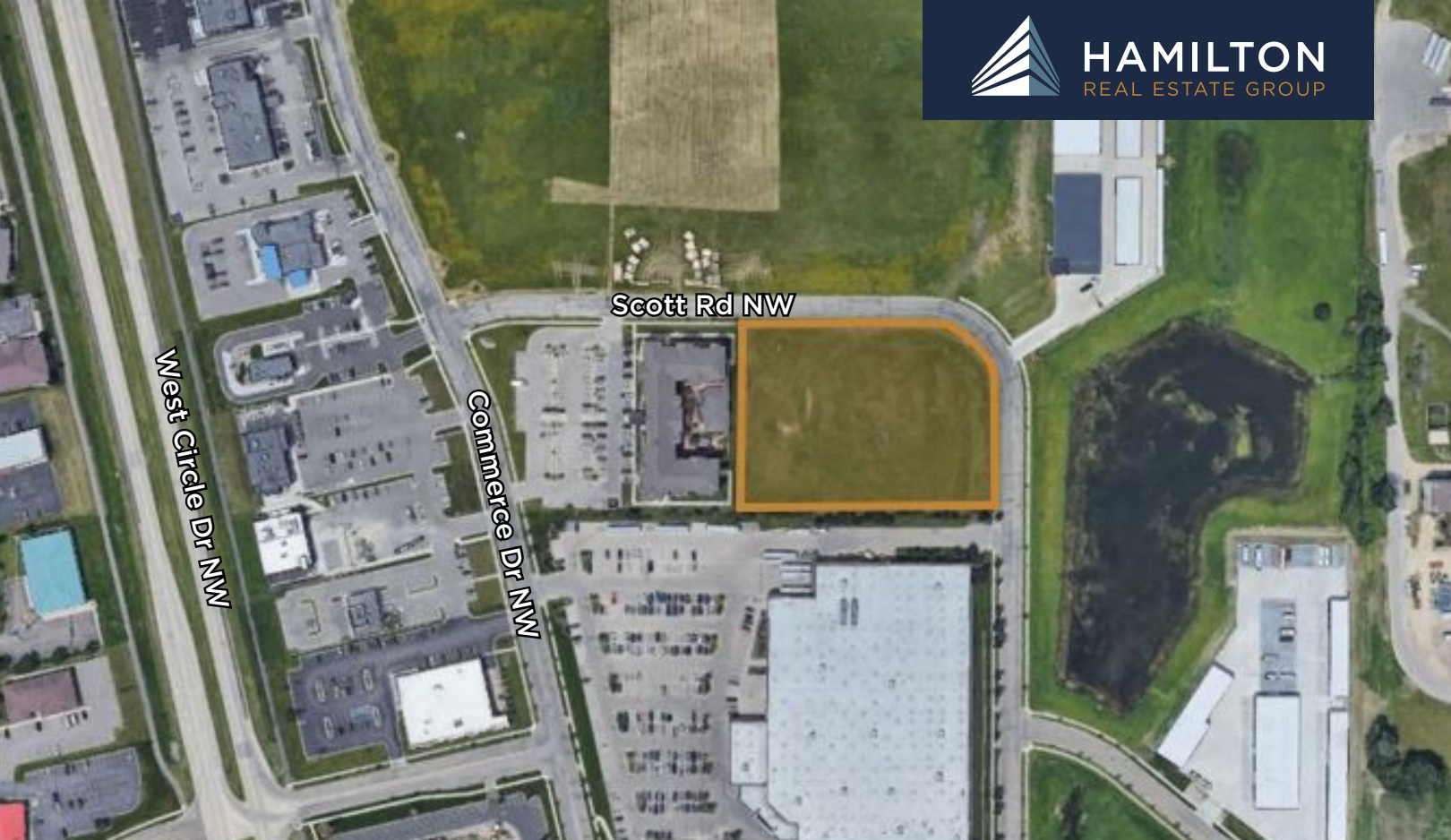




HAMILTON
REAL ESTATE GROUP



LAND FOR SALE

Commercial Development Land

Corner of Commerce Drive and Scott Road NW

Property Description

- 2.82 acres conveniently located in the busy West Circle Drive area, along Commerce Drive and Scott Road, just north of Costco
- Across the street from the future home of Cub Foods
- 27,000+ cars per day along West Circle Drive
- A rare development opportunity in the growing NW Rochester area!

PRICE: \$15 PSF

FOR MORE INFORMATION:

[VISIT OUR WEBSITE](#)

CONTACT

Chad Behnken | Vice President
chad@hamiltonmnre.com
O: 507-281-1002 ext 107 | M: 507-251-7667
www.hamiltonmnre.com



HAMILTON
REAL ESTATE GROUP



CONTACT

Chad Behnken | Vice President
chad@hamiltonmnre.com
O: 507-281-1002 ext 107 | M: 507-251-7667
www.hamiltonmnre.com