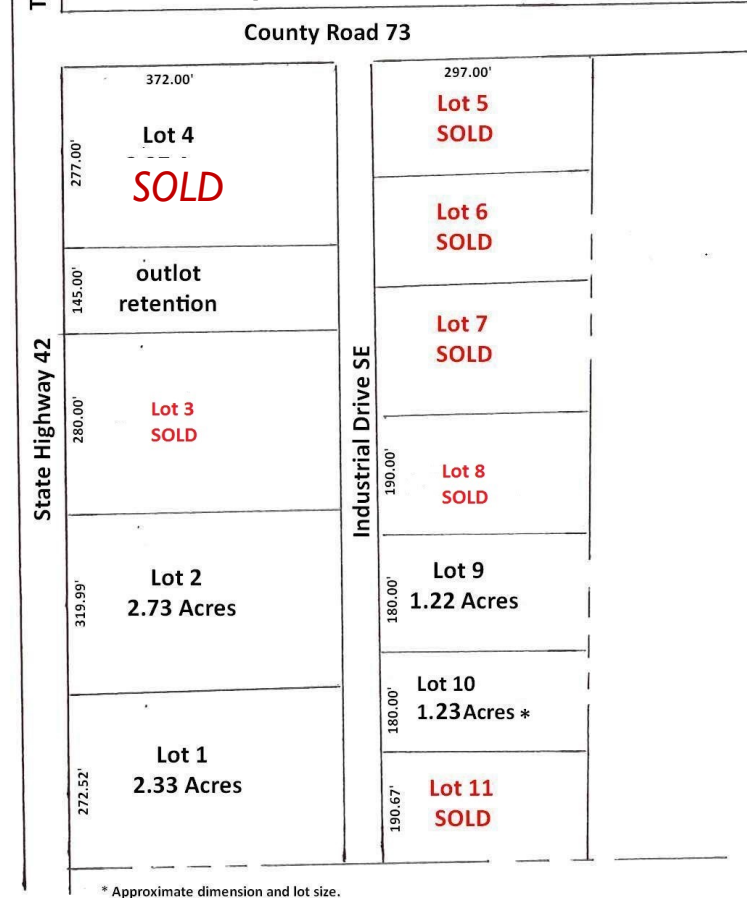


ELGIN INDUSTRIAL PARK

LAND FOR SALE

- Lots available from 1.30 to 7.45 acres
- Commercial Industrial zoning
- City water & sewer
- \$1.25 psf



For more information contact:
Mac Hamilton, CCIM, SIOR, CPM
President
 mac@hamiltonmre.com
Jamey Shandley, CPM
Vice President
 jamey.shandley@hamiltonmre.com
Frank Loosbrock
Associate
 frank@hamiltonmre.com

| | | | |
|---------|------------|---------|-------------|
| Lot 1: | 101,377 sf | 2.33 A | \$126,700 |
| Lot 2: | 119,036 sf | 2.73 A | \$148,800 |
| Lot 3: | 104,160 sf | 2.39 A | SOLD |
| Lot 4: | 103,044 sf | 2.37 A | SOLD |
| Lot 5: | 51,381 sf | 1.18 A | SOLD |
| Lot 6: | 56,430 sf | 1.30 A | SOLD |
| Lot 7: | 56,430 sf | 1.30 A | SOLD |
| Lot 8: | 56,430 sf | 1.30 A | SOLD |
| Lot 9: | 53,460 sf | 1.23 A | \$ 66,800 |
| Lot 10: | 53,709 sf | 1.23 A* | \$ 67,100 |
| Lot 11: | 56,679 sf | 1.30 A | SOLD |

